

# STUDENT GUIDE [2019 - 2020]

## WELCOME !

GO !



UNIVERSITÉ DE NANTES

# [ EDITORIAL ]



Dear students,

As a new academic year begins, all of us at Université de Nantes are pleased to welcome students already accepted and especially those who have just received their high school diploma.

Every year, there are more than 37,000 students preparing one of our 164 degrees within one of our 20 components. Around 4,200 international students, representing a wide range of countries, will be joining us this year and we are pleased and proud to count

them as part of the University.

The future is in youth education, innovation and research. In order to take part in these major challenges, Université de Nantes offers a new model of University in France. This new and decompartmentalised model will bring together Higher Education as well as Research operators (Grands Ecoles, Research Units, University hospitals). Beginning in 2020, it will bring the focus of attention to matters regarding access to quality Higher Education for everyone. The objective being to create the necessary conditions for success and fulfilment for every student and to facilitate major innovation.

Pursuing a degree, whether in a university program, a technical or vocational field, always requires a strong personal investment. Whatever your goal may be, all of us at Université de Nantes are committed to helping you carry it out in the best conditions.

In implementing your project and in building your future, you also have the opportunity to get involved on campus. Yet again, we are devoted to supporting your initiatives and to guiding you in your projects.

We are proud to welcome 150 student associations from a wide variety of interests on our campuses. These associations promote expression, exchange and citizenship awareness among the student body and are all essential for the high standing of the University.

We are committed to enabling project planning, fulfilment of ambition, cultivation of differences and to connecting talents.

I hope you have an exciting year, full of audacity, creativity and success and I pledge a strong and unfailing support from our University.

Olivier Laboux

President of Université de Nantes

# [ CONTENTS ]

- 3 **WELCOME**
- 13 **GETTING STARTED**
- 23 **STUDY**
- 33 **SUCCEED**
- 51 **STUDENT LIFE**
- 69 **GLOSSARY**





# U! **NN NN NN NN**

**EQUAL OPPORTUNITIES**

## [ **WELCOME** ]

- 4** **UNIVERSITÉ DE NANTES:  
UNIQUE AND NEW**
- 7** **TO BE A STUDENT,  
TO BE A CITIZEN**
- 10** **THE GOVERNANCE OF  
UNIVERSITÉ DE NANTES**
- 69** **GLOSSARY**



## UNIVERSITÉ DE NANTES: UNIQUE AND NEW

# UN!

### UNIQUE AND NEW

*A New and Unique university model,*

Université de Nantes has never stopped moving forward. In the last 50 years, Université de Nantes has taken training and research to the highest level and **has become part of the Times Higher Education ranking.**

In January 2020, a new University will emerge in Nantes. Founded by Université de Nantes, the University Hospital, the INSERM, and Centrale Nantes, its goal will be to ease cooperation between the Higher Education and Research operators. This new University model aims to lead up the new institution to the top of international rankings, to improve the quality of Education and Research, and to create the necessary conditions for success and fulfilment.



1 OUT OF 12 NANTES  
RESIDENTS WORKS OR  
STUDIES AT UNIVERSITÉ  
DE NANTES

# IN!

### OPEN AND CITIZEN-MINDED

*Université de Nantes actively participates in the city.*

**Rooted in Nantes** – a city renowned for its vitality, culture, economic development and its quality of life – Université de Nantes radiates also thanks to its 2 campuses in **Saint-Nazaire** and **La-Roche-sur-Yon**.

**With 37,000 students** (including **4,200 international students**) and **3,820 staff**, **50% of which is dedicated to research**, **1 out of 12 Nantes residents works or studies at Université de Nantes**. True cultural, sports and society contributor, our university also encourages the revitalization of its region by enriching public debate and by stimulating creativity: conferences, up to date media equipment, artists-in-residence programs, high-level sports, student commitment through 150 student organisations.

Within its campuses, different disciplines meet to enrich one another. Within 20 faculties and schools, 164 degrees are represented and 55 research laboratories work in all fields of knowledge.

Finally, the renowned expertise of its laboratories and researchers makes of Université de Nantes a major key actor of innovation in the territory.

## UNIVERSITÉ DE NANTES: UNIQUE AND NEW

# ON!

### CREATIVE AND AUDACIOUS

*Dynamic, combative, creative and united,*

The Université de Nantes is involved in the education development in order to make it evolve according to its students needs. Université de Nantes enjoys the major assets needed to encourage local, national and international cooperation and to **make interdisciplinary a factor of innovation and success.** With the Neptune program, Université de Nantes encouraged its 1<sup>st</sup> year students to succeed by offering a continuous support and flexible curricula. The University Information and Guidance Center advises students throughout their university years until their entrance to the labour market. Université de Nantes also provides a global student experience by offering students different services and activities: sports and cultural activities, student engagement in different organizations, solidarity, entrepreneurship, healthcare access...

THE WORLD  
UNIVERSITY  
RANKINGS

1<sup>ST</sup> FRENCH UNIVERSITY ON YouTube  
twitter

10,500 GRADUATES 85% OF BACHELORS AND MASTERS DEGREES FIND A STEADY JOB

150 ASSOCIATIONS 50 FINANCIALLY SUPPORTED STUDENT PROJECTS

460 PARTNER INSTITUTIONS IN THE WORLD IN 5 CONTINENTS

50 MONTHLY EVENTS OPEN TO ALL 4 OF FOREIGN UNIVERSITY CINEMA FESTIVALS



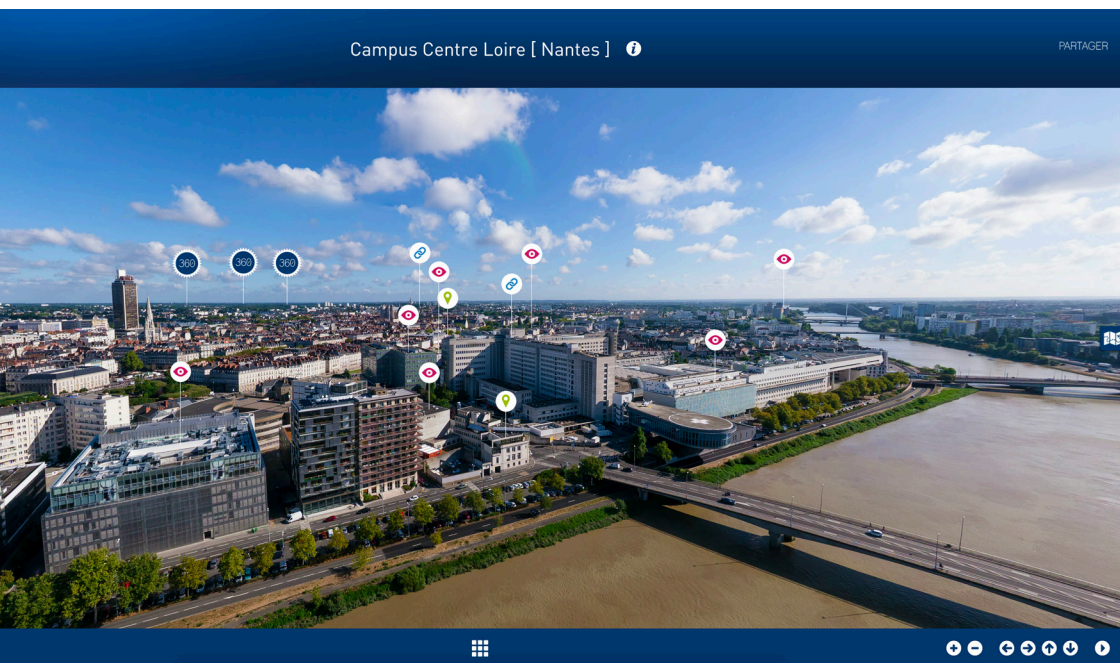
## UNIVERSITÉ DE NANTES: UNIQUE AND NEW

### Bird's eye view of our campuses

Université de Nantes invites you to rise above its campuses.

360° bird's eye view visit on:  
<http://360.univ-nantes.fr>

Each aerial picture has been enhanced with marks of the main places of interest. Those will give you access to presentations of the buildings, pictures and videos.



## TO BE A STUDENT, TO BE A CITIZEN

**Université de Nantes has adopted a strategy for quality assurance and sustainable development in 2014.**

67% of the University's estate is connected to a heat through renewable energies network.

### 50 Gwh

This is the university annual consumption of energy (all kind of energy). This is equivalent to a 120 000 inhabitants city in 2018.

Aware of the societal challenges, the university acts on its energetic consumption and for its waste management. You can participate in this collective effort with simple and common sense eco-friendly actions.

### Energy Saving Actions:

- Switch off your lap-top and its screen after having used it in the computer rooms of the university
- Mark the websites you visit frequently as favorite (this divides up to 4 times the emission of greenhouse gases)
- Always turn off the light when you leave a room, no matter for how long you leave
- Always close the windows when you leave a room
- Always close the main doors of the buildings, especially during winter time

### Management of the waste

We thank you for separating your recyclables respecting the recycling system of your building.

We encourage you to use the garbage for can or cup when available.

### A question, a project?

[dqdd@univ-nantes.fr](mailto:dqdd@univ-nantes.fr)

For more information: [www.univ-nantes.fr/qualite-developpement-durable](http://www.univ-nantes.fr/qualite-developpement-durable)



The sorting of waste operation

## TO BE A STUDENT, TO BE A CITIZEN

### Students Elections

You will have to vote for the renewal of the student's representatives of the university councils and of your faculty council.

Student's representatives are elected for a 2-year mandate.

All information will be sent to you on your student mailbox: [firstname.lastname@etu.univ-nantes.fr](mailto:firstname.lastname@etu.univ-nantes.fr) and on your intranet.

### Student elections

University elections provide an excellent moment of democracy learning.

When you elect your representatives within the different university authorities, you choose people who will be your most suitable interlocutors at the University.

When students come together for elections, they legitimate their elected students, with high participation rates.

There are two kinds of student elections at the University. Elections for central authorities regarding the whole institution and local elections within the faculties.

### AN EVOLVING UNIVERSITY THAT BENEFITS TO EVERYONE: A FOUNDATION THAT SERVES ITS UNIVERSITY

Université de Nantes' Foundation brings together a community committed to the University's transformation. It protects the values of transmission and shared knowledge for the benefit of future generations.

For more information, please refer to our website:  
[www.fondation.univ-nantes.fr](http://www.fondation.univ-nantes.fr)  
Each donation counts!

**FONDATION**  
UNIVERSITÉ DE NANTES 

@contacts :

Fondation de l'Université de Nantes  
Bâtiment des Ateliers et Chantiers de Nantes  
02 72 64 88 92 - [fondation@univ-nantes](mailto:fondation@univ-nantes)

## TO BE A STUDENT, TO BE A CITIZEN

### 136 elected students

represent you in all University authorities.

Elected students in the central authorities:

- 6 in the Board of directors;
- 4 PhD students in the Research Commission;
- 16 in the Academics and University Life Commission (CFVU);
- 6 in the International Relations Council (CURI).

### To be a candidate

You can become an active member of the university by participating in the governing body in charge of its management. The elected students get a particular status which allows them to continue their studies during their mandate.



### Your student representatives:

Full members of the councils (like the administrative and teaching staff representatives), the student representatives are the most suitable interlocutors between students and the University board.

They give their opinion about degrees' validation methods, scholarship attributions for international mobility or students projects, budget matters, social matters, sports and cultural activities...

### Vice-president and Student counsellor

One Vice-president and one Student counsellor are elected for 2 years by the Academics and University Life Commission. Members of the governing body, they are involved in Student Life and elected students matters.

### Elected students within the faculties authorities

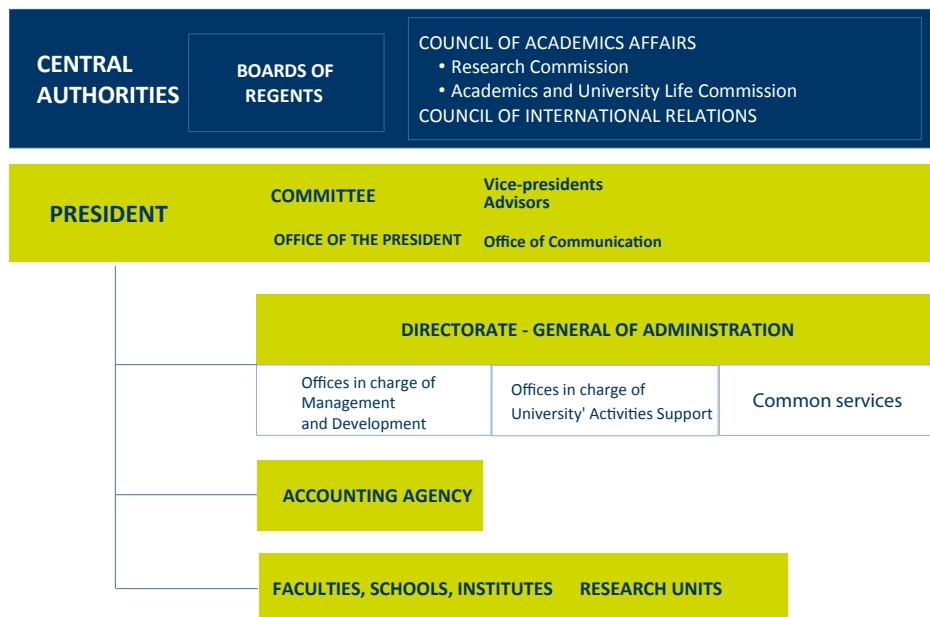
Students are elected in your faculty, school or institute. Main decisions regarding academic affairs, research and student life are taken in these councils.

### Within central authorities (» p.10)

The elected students in the central authorities deal with Academics policies affairs, budget, University development strategy.

For more information, visit your **INTRANET**  
> *Engagement et initiatives étudiantes*

## THE GOVERNANCE OF UNIVERSITÉ DE NANTES



### The elected members

The elected members come from the whole university community and represent professors, administrative and technical staff (BIATSS) and the student body.

External members are also represented in the University Councils.

The elected members are involved in the democratic life of the institution and collectively make decisions about the University.

## THE GOVERNANCE OF UNIVERSITÉ DE NANTES

*Two levels of decision making exist: an executive and a legislative level.*

### The executive branch

The University is headed by a president who is assisted by a committee (*bureau*) elected for 4 years by the Board of Regents. The committee is composed of the vice-presidents and advisors.

### The legislative branch: the councils

The main decisions which guide the executive branch are taken by the councils and the commissions which are composed of professors, administrative and technical staff and students. They are divided in two levels:

- **The University level, the central level** (Board of Regents, Council of Academic Affairs, Research Commission, Academics and University Life Commission, International Relations Council)
- **The component level, the local level.**

### Administration's Executive Management

The Administration's Executive Management coordinates and organizes all administrative, financial and technical services of the University.

These services are organized regarding two main missions:

- management and development
- support to academic activities.

These services implement the policy of the University under the authority of the General Director of the Services.

### Faculties (also known as UFR), schools, institutes, departments, laboratories

The university consists of 20 components: 11 faculties and academic and research units (UFR), 6 institutes, 1 school for teacher training, 1 engineering school and 1 observatory of Earth and planetary sciences.

In general, these components consist of academic departments and research laboratories. They have their own management board.





# [ GETTING STARTED ]

**14** WELCOME AND INFORMATION CENTER

**16** YOUR FIRST DAYS

**19** SPECIAL ACADEMIC ARRANGEMENTS

**20** PASS SUP', THE STUDENT CARD

**69** GLOSSARY

## WELCOME AND INFORMATION CENTER

**Guichet Unique - Foreign Students Welcome Center - the first stop for foreign students!**

### Where is the Guichet Unique?

At the Maison des Échanges Internationaux et de la Francophonie (MEIF), 15 chaussée de la Madeleine in Nantes

Tram 2 or 3 - stop Hôtel Dieu (map p. 74 n° 8)

### Key Dates

- Semester 1: August 26th to October 4th, 2019
- Semester 2: January 6th to 31st, 2020

### Opening Hours

9am to 5pm, Monday to Friday  
From 9am to 12pm and from 1:30pm to 4:30pm in January



Welcome at the Guichet Unique

### Guichet Unique Services

At the Guichet Unique, the international relations staff and student mentors will give you all the information you need to get settled in Nantes:

- **Administrative Formalities** for registering at the university and applying for your residence permit;
- **Accommodation information:** housing insurance and information on obtaining renters insurance and applying for a housing allowance from the Family Allowance Fund (CAF);
- **Health Insurance:** universal health insurance (*sécurité sociale*), supplementary health insurance, reimbursement rates, university health service: Student Health Center-SUMPPS (see p. 56);
- **French banks:** opening a bank account;
- **Student Jobs:** job search information and visa requirements;
- **Transportation Information:**
  - public transport services: Bus and tram (TAN), trains (SNCF),
  - bike rentals,
  - and everything you need to know about how to get around the city and the region;
- **Student Life:** entertainment, cultural activities and regional and international associations.

#### Contact:

[guichet.unique@univ-nantes.fr](mailto:guichet.unique@univ-nantes.fr)  
[www.univ-nantes.fr/guichetunique](http://www.univ-nantes.fr/guichetunique)

## WELCOME AND INFORMATION CENTER

### French Language Courses

The Language Center offers French languages courses for all proficiency levels.

- Full-time semester courses: DUEF «Diplome Universitaire d'Études Françaises (18h/week)
- French support courses: Campus Soir (4h/week)
- Summer courses: Campus Été (20h/week)
- French certification training: DELF B2 (2h/week)
- Classes for international PhD students (please refer to your research lab for more information)

**Contact:** [i-fle.univ-nantes.fr](http://i-fle.univ-nantes.fr)

### Support throughout your stay

The staff at the International Relations Office will provide you with support and assistance throughout your stay in Nantes.

#### Contact:

[international.accueil@univ-nantes.fr](mailto:international.accueil@univ-nantes.fr)  
More information on [www.univ-nantes.fr/foreignstudent](http://www.univ-nantes.fr/foreignstudent)

### Autour du Monde – Erasmus Student Network (ESN)

The association Autour du Monde-ESN Nantes offers various activities and events all year long (buddy program, guided visits, polyglot cafés, parties...).

The association Autour du Monde - ESN Nantes helps you get settled in on your campus and in the city. Duty periods at the Student Center (Pôle étudiant - >p.60)

#### Contact:

[esn.nantes@gmail.com](mailto:esn.nantes@gmail.com)  
[www.esn-nantes.org](http://www.esn-nantes.org)

The Languages Center (SUL) offers 2 kinds of french certifications for international students (>p.46)

**More information on:**  
[i-fle.univ-nantes.fr](http://i-fle.univ-nantes.fr)

### The International Relations Office

is located at the Maison des échanges internationaux et de la francophonie (MEIF), 15 chaussée de la Madeleine in Nantes.  
Tram 2 or 3 - stop Hôtel Dieu (map p. 74 n° 8)

### Do you want a buddy when you arrive in September?

Autour du Monde-ESN Nantes connects you for free with a local student buddy.

This intercultural relations and support group will help you meet new people and get settled in!

### Help international students settle in Nantes!

The International Relations Office and ESN Nantes - Autour du Monde encourage all Université de Nantes students to mentor international students through the Buddy System.

To sign up and for more information visit:  
<https://buddysystem.eu/fr/>



## YOUR FIRST DAYS

Here are some tips, tools and information to help you have a successful academic year.

### Your student card is valuable

Your Pass Sup' is your student ID card.

It proves that you are a student at Université de Nantes.

**Personal, non-transferable and indispensable** in your daily life.

**Take care of it and carry it with you at all times!**  
(see p. 22/23)

### Vignette certifying you are registered at classes.

Each year, in order to update your Student Card, log on your intranet, download and print your "vignette"  
> **VOS WEBSERVICES**  
> **réinscription et autres procédures de scolarité** > **mes documents**.

Your "vignette" must always be kept with your Student Card.

**Change your INTRANET password**  
> **Vos WEBSERVICES** > **Mot de passe**

### Read this "welcome" guide

You'll find everything you need to get started and to succeed.

### Log into your intranet:

[www.univ-nantes.fr/intranet](http://www.univ-nantes.fr/intranet)

To log in, you will need:

- **your student card** (your login is the student number preceded by the letter "e")



- **your password** on your registration certificate, issued with your student card, in the to-scratch part. (see p. 16).

**Your academic information and web services are only available on your INTRANET**  
(see p. 38).

By using the university's IT resources you agree to the **IT charter** given to you at registration.

### Download your Registration Certificate

You need a Certificate of Enrollment during the year? You can download your Certificate on your intranet

► **INTRANET** > **VOS WEBSERVICES** > **réinscription et autres procédures de scolarité** > **mes documents**.

## YOUR FIRST DAYS

### Welcome Week

For the IUT, contact your registrar's office at [www.univ-nantes.fr/scolarites](http://www.univ-nantes.fr/scolarites)

### Your presence is mandatory.

An informative week where professors will explain the academic program, class schedules, testing, and grades. You will also have the opportunity to tour the school.

**This is an ideal time to ask any questions you may have**, familiarize yourself with the course content, tour the facilities and meet your teachers.

### Welcome week calendar

[www.univ-nantes.fr/calendrier](http://www.univ-nantes.fr/calendrier)

For questions, contact the secretariat of your Faculty, institute or school.

### Remember to check the bulletin boards!

In addition to your intranet, also check the bulletin boards, you'll find:

- schedules,
- your tutorial groups (TD),
- teacher absences and make-up classes,
- the examination charter, tests, exam schedules and of course your grades,
- internship offers and information on student life.

Download the UnivNantes app to have access to your schedule and other useful information: your University restaurant menu, University libraries loans, etc.

(see p. 37)



### Learning agreement

You are part of an international exchange program? You have to choose all classes you want to attend and give your learning agreement duly signed to your administrative international coordinator by the following deadlines:

- 1<sup>st</sup> semester: October 11<sup>th</sup>
- 2<sup>nd</sup> semester: February 14<sup>th</sup>

### Special academic arrangements

Special arrangements are available for working students, competitive athletes and students with disabilities (see p. 21)



## YOUR FIRST DAYS

### The University Calendar (l'Agenda)

Available on campus and online. You will find all necessary information and dates for events organized on your campus. (see p. 60).

### Check out our toolkit BIENVENUE !

Advice, tips, deals to prepare your university year on: [univ-nantes.fr/bienvenue](http://univ-nantes.fr/bienvenue)



### Certification in languages

Your language skills can be assessed by independent agencies. Certification is strongly recommended for international mobility and employability and in some cases it is required (engineering schools, teacher recruitment, study abroad applications). (See p. 46).

### Culture and initiatives workshops

Interested in meeting with professionals from the culture scene on your campus? Experiment with artistic techniques? Exchange with fellow students in a convivial setting by working on a group project and seeing it through? Take part in one of the cultural and artistic workshops.

**Registration begins:** Week of September 23<sup>th</sup>, 2019 at the Pôle Étudiant (map p. 74 n°11)

### Cultural and associative activities

You have the opportunity to engage in cultural and associative activities throughout the year: theatre, exhibitions, concerts, festivals, community events, etc. (see pp. 59-61).

### Sports activities

The university offers a wide variety of sports activities. The full list is available on:

[www.univ-nantes.fr/sport](http://www.univ-nantes.fr/sport)

**Registration begins:** September 2<sup>nd</sup>, 2018, with no closing date. (see p. 62).

## SPECIAL ACADEMIC ARRANGEMENTS

### Students with disabilities or long-term illness

To consider the facilities you will need, your first step will be meeting the doctor at the Student Health Center-SUMPPS as soon as possible (take an appointment by e-mail to <http://univ-nantes.contact-sante.fr/RendezVous>). (See p. 56).

This doctor will attest of your situation and can recommend arrangements according to your specific needs.

This support will be coordinated by the "Relais handicap" of the Student Health Center.

The "Relais handicap" supports your student life (access to course content, housing, sport, culture, study abroad) with its partners (Handisup association, the CROUS, etc.).

[www.univ-nantes.fr/relaishandicap](http://www.univ-nantes.fr/relaishandicap)

This website is for students with disabilities, where you can download the form to inform us of your special needs.

#### Contact:

+33 (0)2 40 37 10 35

[relais.handicap@univ-nantes.fr](mailto:relais.handicap@univ-nantes.fr)

### Competitive athletes

Université de Nantes offers certain adjustments (laptop loan, tutoring, special timetable arrangements) to allow competitive athletes to combine studies and sports in all academic fields.

Complete the application to get the competitive athlete status available on [www.univ-nantes.fr/sport](http://www.univ-nantes.fr/sport) and return it to the SUAPS or by e-mail to:

Luc PILLOT\*  
[luc.pillot@univ-nantes.fr](mailto:luc.pillot@univ-nantes.fr)

Your academic advisor, your competitive athlete advisor or Luc Pillot can advise you on the use of the specific academic arrangements. Don't forget to contact them.

Learn more about the special academic arrangements [www.univ-nantes.fr/shn](http://www.univ-nantes.fr/shn)

\* Olympic sailing champion at the 1988 Seoul Olympic Games

### These arrangements will allow students to achieve these two goals:

- graduate within a specified time
- perform their sports at the highest level.

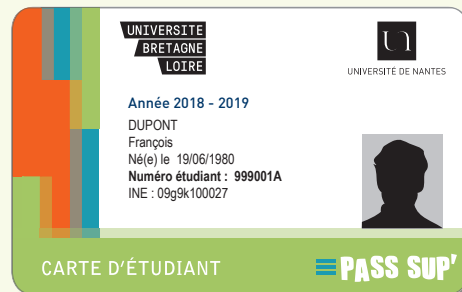
The competitive athlete student status is embedded on your Pass Sup' student ID chip, allowing access to the weight room sports facilities.

# PASS Sup'

## the student card

The Pass Sup' card is the student card at Université de Nantes. You can also use it to pay at the university restaurants.

You should always carry, with your Pass Sup'Card, the vignette certifying that you are registered. ( ► p. 17)



### With your Pass Sup' card you can:

- prove that you are a student at Université de Nantes
- pay for meals at any CROUS restaurant
- borrow books from the University Library
- sign up for sports and fitness activities
- access certain controlled-access areas (parking lots, study rooms, etc.)
- print documents, in Libraries for instance.

More information on:  
[www.univ-nantes.fr/carteetudiante](http://www.univ-nantes.fr/carteetudiante)



## Questions?

### Do I need to pay for my Pass Sup' card?

The Pass Sup' card is free. However if your card is lost or stolen, you will be charged 10 € for a new card (see below under **Assistance**).

### How long is my Pass Sup' card valid?

Your Pass Sup' card is valid throughout your studies. A new sticker will be placed on your card at the beginning of each academic year.

### How do I activate my card?

- Your card is already active and can be used for university services.
- To use it in the university restaurants, you have to activate your "wallet" (IZLY) on line by following the instructions from IZLY services emailed to your university address [firstname.name@etu.univ-nantes.fr](mailto:firstname.name@etu.univ-nantes.fr)
- In this e-mail you will find your login and password to access your "wallet" on <https://mon-espace.izly.fr>
- If you did not receive it or if you lost it, you can ask for a new one on <https://mon-espace.izly.fr/Auth/SendActivationMail>

## Questions about the Pass Sup' online wallet?

### How do I add credit to my Pass Sup' card?

- You can add credit on your online wallet from Internet (laptop, smartphone, digital tablet...), using your credit card or banking information, and accessing with

the login and password you received from IZLY on your student email address:  
<https://mon-espace.izly.fr>

- only if absolutely necessary, you can add credit by paying with cash at the counter of the university restaurant.

### How do I pay for meals at the university restaurants with my Pass Sup' card?

- To pay for meals at the university restaurant, you must first add credit to your online "wallet" on <https://mon-espace.izly.fr> (see the previous question).
- At the university restaurants and cafeterias, you don't have to enter a pin number when you pay. Your card is directly debited by using the rates that apply to you.

### What is the minimum credit I can load on my card?

5 €.

### How can I get back the money that I put on my Pass Sup' card?

You can get your money back from your online "wallet" by using your login and password on [www.izly.fr](http://www.izly.fr).

## Assistance

### My card is lost or has been stolen?

- If you think you lost (or if you've been robbed) your Izly card or your mobile phone or if you think that someone has stolen you Izly password, block your card and Izly account as soon as possible. You can do it from your online account on the Izly website, on the page «Mon profil».

- Ask for stopping all different uses than CROUS catering by sending an email to [production-cms@univ-nantes.fr](mailto:production-cms@univ-nantes.fr) giving your first name, last name and birthdate.
- Report the lost or stolen card to the registrar's office where you registered first
- You will be charged 10 € for a new card.

### What can happen if someone else uses my card without my knowledge?

You must immediately block your card to prevent somebody else from using it. Université de Nantes and CROUS will not be held responsible for any misuses of your card.

### My card doesn't work at the library, copy machines, to access buildings...

Please inform your registrar's office.

### My card doesn't work at the university restaurants nor at the CROUS ATM machines.

Please notify the staff at the counter of your university restaurant.

### I'm having trouble with my online "wallet" on the website <https://mon-espace.izly.fr>

Please notify the staff at the counter of your university restaurant.

# [ STUDY ]

**24** ACADEMICS

**26** DIPLOMAS

**28** EXAMS

**30** KEY DATES

**69** GLOSSARY



# ON!

ACCELERATING KNOWLEDGE



## ACADEMICS

**Université de Nantes offers academic paths leading to most degrees in higher education, in short or long study programs.**

### The LMD system

As part of the harmonization of European higher education, the university study programs are organized around three degrees:

- Licence (Undergraduate degree)
- Master (M)
- Doctorate (D).

**The admission in Master's degrees is selective.**

Do not forget to apply on [www.univ-nantes.fr/candidature-master](http://www.univ-nantes.fr/candidature-master)



Université de Nantes is a major research centre in Western France. 64 laboratories work in all areas.

**Classes are taught by professors who include the latest research achievements in their teaching.**

### LMD system: Licence, Master, Doctorate

The advantages of this system include:

- recognition and equivalence Europe-wide
- student mobility
- better recognition of the degrees on the labour market
- the intermediate degrees Deug, DUT (bac +2) and Maîtrise (bac +4) continue to be issued.

### Organization of studies

#### Semester system

- The licence is divided into 6 semesters
- The master is organized in 4 semesters

#### Credits can be accumulated and transferred

Each semester is assigned 30 credits or ECTS (European Credit Transfer System), common to many European countries:

- licence, 6 semesters validated = 180 credits
  - master, 4 semesters validated = 300 credits
- Holders of a master can prepare a doctoral thesis which corresponds to 480 credits, or 180 additional credits after the master.

## ACADEMICS

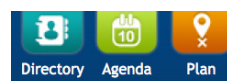
### How do I contact a teacher?

- Go to the secretariat of your faculty, UFR, institute or school (or department) to get your teacher's contact details or office hours.
- Consult the directory on the mobile app: [m.univ-nantes.fr](http://m.univ-nantes.fr)



Annuaire

- or on the home page of the university website.



### If you want to change programs during your first year of Licence:

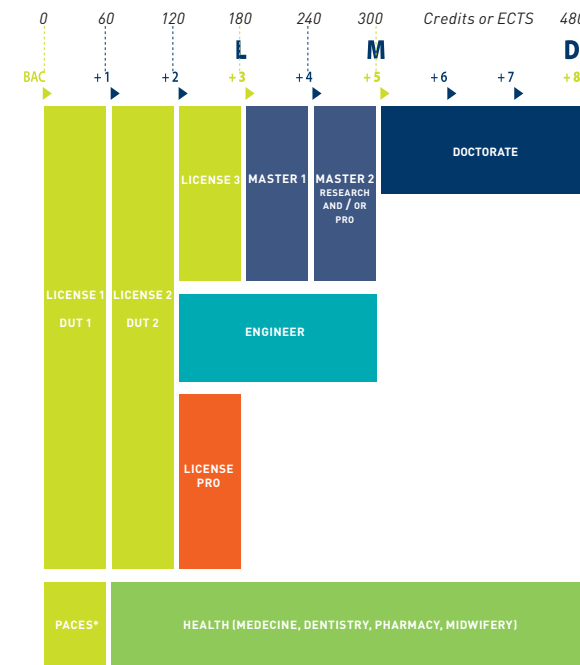
You can do so at the end of the first semester. Check with the Registration Office of your Faculty, Institute or School where you want to enrol.

Find the UFR contact information on [www.univ-nantes.fr/scolarites/demarches](http://www.univ-nantes.fr/scolarites/demarches)

### Course Unit system (Unités d'Enseignement - UE)

The system consists of course units. Each UE has a value defined in ECTS credits and corresponds to the number of hours of study (lectures, tutorials, practical work, personal projects) that the student must complete to obtain a UE. A full year represents 60 credits or 30 credits per semester.

### Diplomas



\* PACES: first year common to health studies

## DIPLOMAS

**A government-sanctioned diploma and teaching backed-up by research**

### Health Studies

The first year of health studies (PACES) consists of core classes that prepare students to take the entrance exams to the schools of medicine, pharmacy, dentistry and midwifery. The curriculum is common to the 4 branches, with specific classes in the second semester.

Université de Nantes has three health studies programs: dentistry, pharmacy, medicine and medical technology (orthoptics, speech pathology and midwifery), taught in three schools in Nantes:

- Medicine and Medical Technology
- Dentistry
- Pharmaceutical and Biological Sciences.



Tutorials in Pharmacy

### baccalaureate + 2 years DUT

The University Diploma of Technology (DUT) is a 2-year degree program. The DUT trains students to work as senior technicians in all fields, for immediate entry to the workplace.

To pursue an advanced degree after the DUT (general license, professional license or engineering school) students must submit an application or have their experiential learning validated before being admitted.

[www.univ-nantes.fr/dut](http://www.univ-nantes.fr/dut)

### baccalaureate + 3 years Licence

The Licence is a 3-year program. At the end of the second year, several choices are available: a general licence, professional licence or engineering school.

The **general licence** can lead to further studies in a Master program or the competitive exams for civil service.

The **professional licence**, developed in partnership with businesses, prepares students for immediate entry into the workplace in fields that require specialized skills. It does not lead to further studies towards a Master.

[www.univ-nantes.fr/licence](http://www.univ-nantes.fr/licence)

## DIPLOMAS

### If you want to study physiotherapy in Nantes\*, you have two possibilities:

- to pass a competitive exam at the end of the PACES (60 spots)
- to study physiotherapy at the STAPS for the first year (up to 100 students, only the first 32 students in rank are selected at the end of the year)

\*Institut de formation en masso-kinésithérapie of Saint-Sébastien-sur-Loire offers 92 spots allocated by the regional council of Pays de la Loire, <https://www.ifm3r.fr>



### baccalaureate + 5 years Master

The Master is a 2-year program. During the first year (Master 1) students begin a specialization. In the second year (Master 2), students can choose a “professional” path for immediate entry in the labor market or a “research” path for pursuing doctoral studies. Many Master 2 programs require an internship of 4 to 6 months (at a business or research organization).

[www.univ-nantes.fr/master](http://www.univ-nantes.fr/master)

### baccalaureate + 5 years Engineering degree

Université de Nantes has an engineering school: Polytech Nantes. This is a 3-year program for students who have already completed a 2-year degree (L2 or DUT, for example). It is designed for students who want to be senior engineers in industry or industrial public service.

[polytech.univ-nantes.fr](http://polytech.univ-nantes.fr)

### baccalaureate + 8 years Doctorate

The Doctorate is open to holders of a Master degree. This degree is awarded after defending a thesis, written under the supervision and responsibility of a thesis director. The thesis is usually done in three years. The Doctorate leads to careers in research and development in the private sector but also careers as professors or researchers in public institutions (universities, CNRS...).

[www.univ-nantes.fr/ecolesdoctorales](http://www.univ-nantes.fr/ecolesdoctorales)

## EXAMS

## Exam schedule

**Exam notifications will be posted** in the hall of your faculty.

*For the IUT, there are no exam sessions, only continuous assessment.*

*The School of Engineering, Polytech, has specific study regulations.*

## Testing

For each course unit (UE) you will be tested:

- either by continuous assessment,
- or by one or more final exams,
- or by a combination of the two.

## The day of the exam

- Do not forget to check the bulletin board for the dates and location of your exams
- Show up 30 minutes before your exam starts
- Pay careful attention to the location of your exam
- Do not forget your identification card AND your student card with the vignette certifying that you have registered (►► p. 16).

## Exam sites

Your exams may take place:

- on your campus
- at the SUAPS (map p. 75 n° 15)
- at the stadium Pierre Quinon (map p. 75)
- at la Beaujoire (for PACES exam).



Exam

## EXAMS

## To contact your Registrar's Office:

INTRANET > SCOLARITE,  
INSCRIPTION, CALENDRIER

## Succeeding in your UE, Semester, Year

Each academic field has its own grading requirements. Please see your registrar's office for more information.

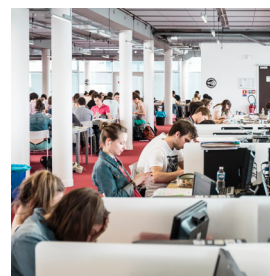
## Earn Sports Points

Each semester, in some faculties, schools or institutes, points can be earned through sports classes. For questions, contact the secretariat of your Faculty, institute or school.

## Passing into the next year

L1 ► L2	if at least one semester is validated
L2 ► L3	If both semesters of L1 are validated + 1 semester of L2
L3 ► M1	Only if all semesters of the three years of License are validated and you have earned your License degree
M1 ► M2	Only if the M1 is fully validated Grade repetition subject to approval

*\* subject to conditions depending on the courses*





## KEY DATES

Check the university calendar of your UFR, institute or school on:

[www.univ-nantes.fr/calendrier](http://www.univ-nantes.fr/calendrier).

For all information regarding your courses, please visit your faculty, UFR, institute or school website.

Events calendar for all the campuses is available on:

[www.univ-nantes.fr/agenda](http://www.univ-nantes.fr/agenda)



Semester 1	July 5 <sup>th</sup>	Registration begins - Welcome to the University
	August 26 <sup>th</sup> to September 10 <sup>th</sup>	◀ First day of classes (depending on your degree)
	August 26 <sup>th</sup> to October 4 <sup>th</sup>	◀ Guichet Unique - Foreign Students Welcome Center, the first stop for foreign students
	October	Submission of FSDIE applications (support for student projects) (see p. 59)
	December 21 <sup>st</sup> to January 5 <sup>th</sup>	Christmas holidays
	Mid-December to mid-January	◀ First semester exams

## KEY DATES

Semester 2	January 6 <sup>th</sup> to January 31 <sup>st</sup>	◀ Guichet Unique - Foreign Students Welcome Center, the first stop for foreign students
	February	Submission of FSDIE applications (see p. 59)
	Mid-January	International Application deadline for 1 <sup>st</sup> year undergraduate admission
	January 15 <sup>th</sup> to May 31 <sup>st</sup>	<b>Dossier Social Etudiant.</b> Fill in your scholarship application and your accommodation application (university residences) on : <a href="http://www.etudiant.gouv.fr">www.etudiant.gouv.fr</a>
	End of March	International Application deadline for 2 <sup>nd</sup> and 3 <sup>rd</sup> year undergraduate and graduate admission
	April	Submission of FSDIE applications (see p. 59)
	April 11 <sup>th</sup> to April 26 <sup>th</sup>	Spring holidays
	May	◀ Second semester exams
	June	Submission of FSDIE applications (see p. 59)
	Mid-June	◀ Start of the second exam session



Law, Economics, Management Library

A low-angle shot of a large crowd of graduates at a commencement ceremony. Many black graduation caps are being thrown into the air, creating a dynamic and celebratory scene. The graduates are looking upwards with expressions of joy and accomplishment.

# N

BEING A VISIONARY

## [ SUCCEED ]

- 34** 10 KEY TIPS
- 35** SUPPORT SERVICES  
TO HELP YOU SUCCEED
- 36** STUDENT INTRANET
- 37** UNIVNANTES MOBILE APP
- 38** UNIVERSITY LIBRARY
- 40** BROADENNING YOUR KNOWLEDGE
- 42** CERTIFICATIONS
- 45** LANGUAGE COURSES
- 46** WORKING TOWARDS  
YOUR CAREER GOALS
- 48** STUDENT ENTREPRENEURSHIP
- 69** GLOSSARY



## 10 KEY TIPS for a successful academic year

### 1 ▶ Confidence

Higher education is the logical continuation of high school. You will have to get used to being more independent and that's a big change. So be confident in your abilities, but make sure you stay organized.

### 2 ▶ Organization

Plan your study time, set yourself goals with specific deadlines and stick to them. We offer classes on study skills (see p. 36), make sure you attend.

### 3 ▶ Attendance

Don't skip classes. Successful students attend all their classes. Remember that every hour in class requires one hour of homework to review your notes and do further research.

### 4 ▶ Motivation

90 % of successful students have chosen a field of study they are interested in. This gives them the energy and motivation to successfully overcome the difficulties.

### 5 ▶ Hard work

There are countless useful resources you can use to learn more about various subjects (see p. 38 to 43). Using these resources to learn better and smarter is often what makes the difference between good students and the best students.

### 6 ▶ Support network

Loneliness is common among students, especially at first. Try to form small working groups; you can encourage each other and your grades will improve.

### 7 ▶ Reflexes

If you have any doubts, questions, problems, seek help. Knowledgeable people can help, please don't hesitate to contact them (see p. 36).

### 8 ▶ Sociability

A good way to meet people and make friends is to get involved in a club or association. Contact the Student Life Office (see p. 59) who will refer you to the many opportunities on campus.

### 9 ▶ Take breaks

Get outside, have some fun, get some exercise or attend a cultural event. This is also a good way to meet new people.

### 10 ▶ Look at the big picture

Take time to think about your future, try to figure out your real motivations and your interest in your chosen field of study. The SUIO is here to help you identify your career goals and tailor your study program (see pp. 48-49).

## SUPPORT SERVICES TO HELP YOU SUCCEED

**Université de Nantes  
has developed a number  
of systems to help you  
succeed in your studies.**

[www.univ-nantes.fr/  
reussirsalience](http://www.univ-nantes.fr/reussirsalience)

### New student orientation

Mentors: during registration, you are greeted by student mentors who help you discover the university, help you with the registration process and answer any questions you may have.

### Welcome Week

During the first week of classes, your teachers will hold meetings where they will explain what you need to know about your schedule, the subjects taught, testing and grades. You will also have the opportunity to tour the university.

### Your Academic advisor

Your academic advisor assists you throughout your first year at the university. Academic advisors will answer your questions and provide advice on facilitating the transition between high school and college.

### University study skills

During the 1<sup>st</sup> semester the university offers courses to help you learn the study skills specific to your degree program. Note taking, time management, documentary research, group work, critical data analysis, writing a paper and oral presentation. You will also visit the university library during the class.

### Changing tracks after the first semester of the first year of License

You can change tracks after the first semester of your first year of License if you have passed all your exams, without having to start the whole year over.

### Parcoursup

Support measures are implemented for students in the faculties of Sciences, Sports (STAPS), Foreign Languages (LEA), and at the Economics and Management Institute.

### Contact:

Your academic advisor.

### SWITCH

If you wish to change your academic orientation during the year, you can benefit from the SWITCH arrangement (individuals interviews or collective modules).

[www.univ-nantes.fr/switch](http://www.univ-nantes.fr/switch)



## STUDENT INTRANET

### Access to your intranet with your login and password

see p. 14, 15, 16 and 17.

### Change your password

by going to your **INTRANET**  
> **VOS WEBSERVICES**  
> *Mot de passe*

### You have lost your password?

You can reset it by yourself online on: [www.univ-nantes.fr/motdepasse](http://www.univ-nantes.fr/motdepasse)

The university staff can reset your password if you lost it. Feel free to ask them.

Please note that for security reasons, passwords cannot be provided to you by phone or email.

### Advice:

**Never give out your password.**

### Join the community #univnantes



1<sup>st</sup> university community in France on Twitter and Youtube

### The student intranet makes your life easier!

Stay connected

#### Your Student e-mail address:

*fisrtname.lastname@etu.univ-nantes.fr*

Check it regularly as all the information that concerns your classes and university life will be sent to you at this address.

#### How to access your student email address?

- You have direct access to your web-mail on your **INTRANET>VOS WEBSERVICES>WEBMAIL**
- By redirecting your student email address towards your personal mailbox (<http://moncompte.univ-nantes.fr> puis «ma messagerie»)
- By configuring your smartphone or any other mailbox (more information on [wiki.univ-nantes.fr/etudiants](http://wiki.univ-nantes.fr/etudiants))

#### • Other webservices:

- to get in touch (online forum, chat...), forwarding files (fileX)
- to consult your classes (Madoc), your schedules, your grades;
- to ensure your success (internship, jobs, advice...) with the Career Center

#### WEBSERVICES

All your online services available on one platform, **INTRANET > VOS WEBSERVICES**

## UNIVNANTES MOBILE APP

### UnivNantes: the mobile app that makes your everyday life easier!

The mobile app UnivNantes offers a range of useful practical services while on the move.

- Consult your timetable and be informed in real time about course changes\*
- Find your way on campus, find the building you want to go to
- Be informed about last minute changes linked to sport activities
- Consult the University Library book loans and be informed when a loan period comes to an end
- Have real time University Library opening hours
- Reserve a NoctamBU spot (BU Santé)
- Consult today's menu at the University Restaurant
- Set up your preferences

*\*For every students, except IUT de Nantes, IUT de Saint-Nazaire, ESPE Angers and Le Mans.*

The mobile app available on the App Stores



» Search for UnivNantes in your Store.



## UNIVERSITY LIBRARY

**University Library:  
a tool to help you  
succeed****Library hours in Nantes**

During the academic year, 8:30 am to 7 pm Monday to Friday, and 8:30am to 1pm on Saturday mornings.

The Library of Medecine is open from 8:30am to 6pm from mid-October to mid-May.

University libraries in Saint-Nazaire, La Roche-sur-Yon, and on the Chantrerie campus may have different opening hours, make sure you check out [bu.univ-nantes.fr](http://bu.univ-nantes.fr) for more information.

**Tip**

Find the real-time schedule on [nantilus.univ-nantes.fr/horaires](http://nantilus.univ-nantes.fr/horaires)

**Opening hours during  
university breaks**

Depending on the sites, the libraries close one week at Christmas and 2 weeks in August.

More info on:  
[www.bu.univ-nantes.fr](http://www.bu.univ-nantes.fr)

**The university  
library will help  
you during your  
studies!**

With seven locations in Nantes, Saint-Nazaire and La Roche-sur-Yon (pp. 62 to 65), the university library offers you **multidisciplinary documentary collections**, on divers supports, for courses, research, information and leisure.

The printed and digital collections are indexed in a **unique catalog, Nantilus**: [nantilus.univ-nantes.fr](http://nantilus.univ-nantes.fr).

You will find encyclopaedias, books, thesis, e-books, scientific journals, French and international newspapers, and search databases in all academic fields, but also novels, comic books and DVD.



UFR Pharma - BU santé

## UNIVERSITY LIBRARY

**NoctamBU**

From September to Mid-June, 400 spots are offered on expanded evening hours until 11:30 pm and on weekends at the Health Library (city centre, map p. 74 n° 4).

**Reservation required on:**

<http://nantilus.univ-nantes.fr/noctambu> or even better from your mobile app

**Loan at the BU**

The mobile app will allow you to receive alerts regarding your loans, your schedules, and also to sign up for NoctamBU.

**Nomade**

Most of these digital resources are accessible not only at the library, but also remotely.

The online service “nomade” is accessible from your **INTRANET > VOS WEBSERVICES > Accès nomade**



BU Saint-Nazaire

The library also offers many services:

- **individual study spots** and **working rooms** for groups; with disabled access;
- borrowing of documents and interlibrary loan of documents that don't belong to Université de Nantes;
- information by chat and e-mail;
- **documentary research** training sessions within training programmes or BU workshops;
- loan of computers on site, computer rooms, WIFI and copy machines;
- documents printing with your student card
- Support to PhD students in spreading and publishing their work
- exhibitions and various cultural events (conferences, readings, workshops...)
- Facilities for people with disabilities

**Find more information about the BU on:**

[www.bu.univ-nantes.fr](http://www.bu.univ-nantes.fr)  
[twitter.com/univnantesbu](https://twitter.com/univnantesbu)

## BOARDENING YOUR KNOWLEDGE



[www.webtv.univ-nantes.fr](http://www.webtv.univ-nantes.fr)



[www.youtube.fr/univnantes](http://www.youtube.fr/univnantes)

The University of Nantes is the 1st French University on Youtube with its 24000 followers.



[plus.franceculture.fr/partenaires/nantes](http://plus.franceculture.fr/partenaires/nantes)



[www.unnews.univ-nantes.fr](http://www.unnews.univ-nantes.fr)



[www.labodessavoirs.fr](http://www.labodessavoirs.fr)



[www.prun.net](http://www.prun.net)  
92 fm

### More than 1400 video resources

**Short and original formats to understand Research in a different way.**

- «Digression», «one question one researcher», «Looking for innovation»...

**Full lectures to understand societal topics and the news.**

- Boris Cyrulnik, Edgar Morin, Tobie Nathan.

### UNNEWS: do not miss anything from UN news !

Scientific discoveries, athletes performances, last pedagogical innovation... stay informed about your university current affairs on UNNEWS, Université de Nantes online magazine!

Every week, our researchers will also give explanations about current topics. You will also find information about your campuses events not to be missed!

### The «Labo des savoirs»

Every week, some volunteer journalists from the «Labo des Savoirs» (Lab of Knowledge) meet researchers and highlight Research through interviews and scientific reports.

### Prun'

Prun is a student Radio created at the University and gathers more than 250 volunteers who produce more than 70 radio programs: around 50 musical radio programs for all music styles, more than 15 thematic radio programs (sciences, culture, sport, health, politics...) and 2 daily radio programs.

## BOARDENING YOUR KNOWLEDGE



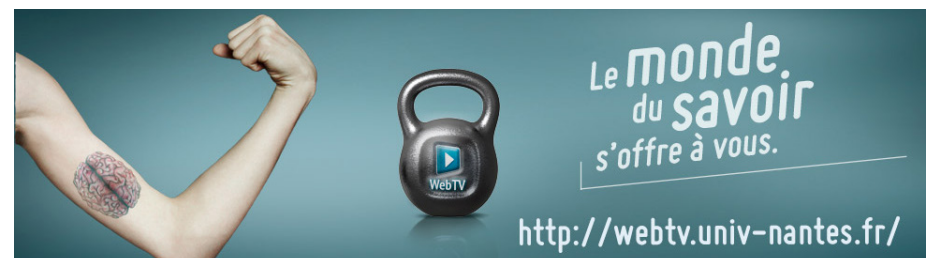
Component of the University, UP's goal is to ensure education all life long, to spread university culture and to make it accessible to a wider audience.

### UP !

The Permanent University (UP) offers:

- conferences, meetings and exhibitions from November to May, from Monday to Saturday (free of charge upon presentation of your student card)
- «The musical hour» every thursday at 6:30pm
- meeting with writers (stay informed about UP current events on our website)

**Contact :** [univ-perm@univ-nantes.fr](mailto:univ-perm@univ-nantes.fr)  
More information on [www.up.univ-nantes.fr](http://www.up.univ-nantes.fr)  
(» plan p. 74 campus Île de Nantes n° 1)





## CERTIFICATIONS

Université de Nantes offers students the opportunity to certify their computer and language skills.



### The C2i - Digital Skills Certificate

#### *Prepare your digital skills certificate!*

PIX is a public online platform project for digital skills assessment and certification.

The University proposes this new certification.

#### *The Pix certification*

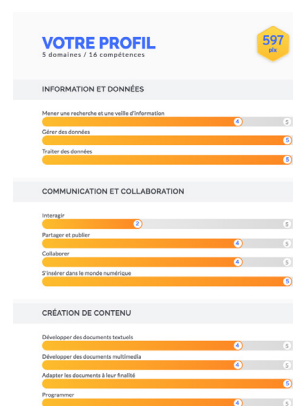
Pix will allow you to certify your command of several digital skills necessary to: complete successfully your studies, begin your professional life, your personal life... etc. It relies on the European Digital Competence Framework for Citizens (DIGCOMP).

The digital skills certified by Pix are divided in 5 areas:

- Information and data
- Communication and Cooperation
- Content creation
- Protection and safety
- Digital environment



## CERTIFICATIONS



#### How getting ready for the Pix certification?

##### Step 1: self-assessment

- Create a personal account on <https://pix.fr>
- Determine your skills profile through online activities.

##### Step 2: Training

- Face-to-face or online, you have access to resources on Madoc, self-registration from your **INTRANET > VOS WEB-SERVICES > Madoc**

##### Step 3: Evaluate your progress

- Repeat activities about Pix and improve your skills profile.

Then, the certification is based on this skills profile.

#### *A certification incorporated in the study programmes*

Many university study programmes (licence and DUT) include a **digital skills and culture** training programme (CCN), that will lead you to get the Pix certification. The certification registration is automatic, you will be automatically register as for your semester exams.

For other cases, please refer to «**CCN opening path**».

**The C2i certificates (level 2)** are intended to a professional use of digital tools, related to a field of study or career, and are intended to students from specific master's degrees (teaching, legal and health professions).

#### *Information and registration*

[univ-nantes.fr/pix](http://univ-nantes.fr/pix)  
[pix@univ-nantes.fr](mailto:pix@univ-nantes.fr)

## CERTIFICATIONS

The Language Center of Université de Nantes advises and guides you throughout your language certification.

The Language Center welcomes you:

Bât. Nouveau Tertre  
Chemin la Censive du Tertre  
BP 81227  
44312 NANTES CEDEX 3  
Tramway ligne 2 arrêt « Facultés »

(► plan p. 75 n° 3)

[servicelanguages@univ-nantes.fr](mailto:servicelanguages@univ-nantes.fr)

**When and how to take an assessment exam to receive a certificate of proficiency in a language?**

Whenever you feel ready. To assess your language skills, to study abroad with an exchange program or for your résumé.



### French Language Certificates and Tests

The Language Center organizes 2 official French language certifications recognized by the French Ministry of Education:

- The DELF (Diplôme d'études en langue française) and the DALF (Diplôme approfondi de langue française).
- The TCF (Test de connaissance du français) and the DAP-TCF (required for first year undergraduate admission).

**For further information and dates:**

[i-fle.univ-nantes.fr](http://i-fle.univ-nantes.fr)

### Certification in other languages

Your proficiency in a foreign language can be attested by an assessment exam that will test your oral and/or written language skills. Certification is available in German, English, Chinese, Spanish, Italian and Portuguese (subject to the number of applicants).

Certification is a requirement for some Master and Licence programs.

**It is highly valued in terms of international mobility and is an asset to your employability.**

## LANGUAGE COURSES

The Language Center also guides you throughout your learning of foreign languages.

(See address ► p. 46).

### Campus soir – Campus été: Foreign Languages Classes

Diverse training programs to learn and practise foreign languages are organized by the Language Center. You plan to study abroad? You want to learn or improve your language skills? You are preparing a language certification? Université de Nantes organises diverse complementary language programs:

- Refresher Courses/Advanced Courses
- Conversation workshops
- Certification Preparation
- Less Commonly Taught Languages Initiation
- Mobility Preparation

Registration is required and takes place each semester in September, December and March (courses are open subject to the number of applicants)

**More information and registration:**

[sul-campus@univ-nantes.fr](mailto:sul-campus@univ-nantes.fr)

[pratiquerleslangues.univ-nantes.fr](http://pratiquerleslangues.univ-nantes.fr)

### Languages resources center

Come to visit the Languages Resources Center from the University Services for Languages, and take advantage of personalized advice to support you in your foreign languages learning process.

Upon request, benefit from online tools to improve your languages skills and to make a self-assessment.

**More information and registration:**

[sul-campus@univ-nantes.fr](mailto:sul-campus@univ-nantes.fr)

[pratiquerleslangues.univ-nantes.fr](http://pratiquerleslangues.univ-nantes.fr)



## WORKING TOWARDS YOUR CAREER GOALS

Throughout your academic career, get ready for your professional future

### SUIO Welcome desk - University Service for Information and Career Orientation

Monday through Friday  
from 8:30 am to 5:30 pm

Maison des services  
universitaires  
110 boulevard Michelet in Nantes  
+33 (0)2 40 37 10 00  
(map p. 76 n° 35)

Tram line 2 – Stop Michelet or  
Morrhonnière

### The Documentary resources center is open

From Monday afternoon to  
Friday:  
9:30 am to 12:30 pm  
1:30 pm to 5:30 pm  
Closed at 4.30 pm on Fridays



Maison des services universitaires

### Online services in your Career Center:

- Personalized access
- Jobs videos
- Advice
- Events: workshops, fairs
- Internship and job offers
- Information about companies
- Resources for your career



### Registration:

[www.univ-nantes.fr/careercenter](http://www.univ-nantes.fr/careercenter)

### An available team, some personal advice, and some collective workshops to:

- Get career guidance
- Meet professionals, and learn how to convince them
- Find an internship, a job
- Learn how to write your resume and cover letter
- Prepare for an interview

### More information on:

[univ-nantes.fr/suio](http://univ-nantes.fr/suio)

## WORKING TOWARDS YOUR CAREER GOALS

All year long, our advisors guide you at each step of your career.

### Building your educational curriculum

- Succeed in your academic reorientation (starting from October)
- Be accepted in some selectives programmes (February to April)
- Continuing your work-linked training (March to April)

### Meeting professionals

- Student jobs: workshops and fair (September)
- Find an internship (October to December)
- Summer jobs: workshops and fairs (April)

### Getting your first job

- JD Coaching
- Joining the Alumni network: [univ-nantes.fr/alumni](http://univ-nantes.fr/alumni)



Coaching for young graduates



## STUDENT ENTREPRENEURSHIP

### MISSION

#### ENTREPRENEURIAT

Let's talk about your project!

Meeting upon appointments  
entrepreneuriat@univ-nantes.fr

#### Coming to the Entrepreneurship Mission

Campus Tertre  
IAE (bât. Petit Port, bureau 112)  
Chemin de la Censive du Tertre  
Tram 2 - arrêt Facultés

(►► plan p. 75 n°14)

### Making projects during your studies

You have an idea, a project about creating or buying a business? Do not wait to end your studies to start!

Thanks to several arrangements, like the student entrepreneur national status (SNEE), the university allows you to combine studies and entrepreneurship, whatever your curriculum, your study level and your areas of interests are.

The student entrepreneur national status allows you to:

- be officially recognized as a student and as a entrepreneur
- benefit from schedule arrangements
- replace your training period at the end of the academic year
- have access to the university coworking areas
- benefit from a personalized support according to the progression of your project.
- be connected to the local entrepreneurship network.



Mathieu Sikorski, co-founder of XPLoading [video games] during the University pitch contest

## STUDENT ENTREPRENEURSHIP

### You wish to discover the entrepreneurship ?

All along the year, the Entrepreneurship Mission organizes different events to inspire you and to introduce project management.

For instance; the Innovation Campus Day (a 24h creative marathon), monthly lunch *Fringales!*, themed workshops, lectures,...

Complete information on your  
INTRANET > *Entreprendre pendant vos études*



Advice to undertake, support programmes, networking events, entrepreneurs' testimonies... Stay informed and be inspired on the Mission Entrepreneurship facebook page!  
(@missionentrepreneuriat)



Sibel Kunduru, Public Management Master student and entrepreneur



UN!

CREATING NEW INTERACTIONS

# [ STUDENT LIFE ]

- 52** STUDENT BUDGET
- 54** STUDENT HEALTH CENTER
- 56** UNIVERSAL HEALTH CARE
- 57** STUDENT INITIATIVES
- 58** PÔLE ÉTUDIANT - STUDENT CENTRE
- 59** CULTURE
- 60** SPORTS
- 62** PUBLIC TRANSPORT
- 64** USEFUL CONTACTS
- 69** GLOSSARY
- 72** CAMPUS MAPS

## STUDENT BUDGET

	1st month	Following months
Tuition fees <sup>(1)</sup>		
• Licence	170 €	
• Master and Doctorate	243 €	
Student and Campus Life Contribution <sup>(2)</sup> (to be paid to the CROUS before registration)	91 €	
Complementary Health Insurance	8 € to 40 €	8 € to 40 €
Housing (1st month + 1 month deposit)	700 € to 1200 €	350 € to 600 €
Housing insurance	40 € to 80 € / a year	
Groceries	200 €	200 €
University cafeteria (3,25 € per meal)	+/- 195 € for 2 meals a day (7 days a week)	
Public transport pass (TAN) (monthly fare)	40 € or 68 €	40 € or 68 €
Impulsyon (La Roche-sur-Yon)	24 €/month during 8 months + 7 € the 9 <sup>th</sup> month + 3 free months (199 € for the 12 months)	
STRAN for student with proof of status (Saint-Nazaire)	23 €/month during 10 months, 230 € for a year (2 free months)	
School supplies (depending on study program)	+/-150 €	+/-100 €
Miscellaneous (entertainment)	100 €	100 €
OFII Tax		
Visa validation - residence permit (except for specific situation, ► p. 22 : contact the International Office)	60 €	

(1) En attente de l'arrêté ministériel pour les tarifs 2018-2019

(2) Conditions particulières pour les boursiers. Renseignements auprès du Crous : [www.crous-nantes.fr](http://www.crous-nantes.fr)

## STUDENT BUDGET

## Meals, housing and transport

CROUS housing and scholarships:  
[www.crous-nantes.fr](http://www.crous-nantes.fr)

All CROUS housing give right to the CAF (Caisse d'Allocations Familiales) housing allowance.

Housing allowance (APL): [www.caf.fr](http://www.caf.fr)

Find all the information on  
[www.univ-nantes.fr/viepratique](http://www.univ-nantes.fr/viepratique)

## Summer jobs and seasonal jobs

Are you looking for a work to finance your studies or your holidays? Université de Nantes will help you in your job search and even offers some jobs on campus.

[www.uni-nantes.fr/careercenter](http://www.uni-nantes.fr/careercenter)

You can also take a look at the CROUS website:

[jobaviz.fr](http://jobaviz.fr)

**If you are a non-European student, except students from Croatia, you need to have a valid residence permit that authorizes you to work. Foreign students are allowed to work up to 20 hours per week (60% of the legal work time in France).**

## Are you struggling with unexpected expenses or a lack of resources? Do you have difficulty balancing your budget?

Social workers at Student Health Center-SUMPPS (see p.56) can help you get through difficult times by giving you information about the help you can seek (grants, loans, budget...) and your rights regarding housing, social protection... and all other aspects of daily life.

**More information on your INTRANET > SANTÉ SOCIAL**

## Social Pricing for Transport Pass

In Nantes and Saint-Nazaire, you can get up to 50% discount or a free transport pass depending on your incomes. All information on: [www.tan.fr](http://www.tan.fr) (for Nantes) or [www.stran.fr](http://www.stran.fr) (for Saint-Nazaire).

## Working within the University

Your University also offers some student jobs.

On the University website:

[L'Université > Travailler à l'Université > Recrutement étudiant](#)



## STUDENT HEALTH CENTER

### Student Health Center (SUMPPS)

Maison des services universitaires  
110 bd Michelet – Nantes  
map p. 76 n° 35  
Tram line 2. Stop: Morrhonière or Michelet

[accueil.sumpps@univ-nantes.fr](mailto:accueil.sumpps@univ-nantes.fr)  
+33 (0)2 40 37 10 50

**More information on your INTRANET: > SANTÉ SOCIAL**

- If you have a **health condition**,
- If your **primary physician is far away**,
- Or if you're having a **difficult time adjusting**, you may need to speak to somebody.

**Please contact the student health center.**

### Medical Services at your service

**Nursing** (preventive visit - care - emergency contraception - pregnancy test - vaccination - smoking cessation - well-being workshop - cooking and nutrition workshop - first-aid training session - supporting and counseling services).

**General Practitioner**, Consultations with appointments. Take an appointment on [univ-nantes.contactsante.fr](http://univ-nantes.contactsante.fr)

Create your account using your student email address.

**Psychological service**, Consultations with appointments by phone or at the SUMPPS.

**Dental healthcare appointments**, Appointments must be made online: [univ-nantes.contactsante.fr](http://univ-nantes.contactsante.fr)

**Social service**, depending on your UFR, faculty, please take an appointment at the Student Health Center (+33 (0)2 40 37 10 99) or at the CROUS (+33 (0)2 40 37 13 39).

You can find your social service contact on the INTRANET > **SANTÉ SOCIAL** > **Service Social**

### Disabilities

You can take an appointment with a doctor and ask for arrangements of your exams or academic program.

Please contact the “Relais Handicap” (see p. 21).



Students «Relais Santé» (for Health Prevention)

## STUDENT HEALTH CENTER

### Preventive Medical Visit

Don't forget to attend your preventive medical visit **during your 1st year at the university.**

For students registered in medical studies, the preventive visit has to be done during the 2<sup>nd</sup> year of studies.

Online registration on:  
[univ-nantes.contactsante.fr](http://univ-nantes.contactsante.fr)



You must create your personal account beforehand using your student email address ([@etu.univ-nantes.fr](mailto:@etu.univ-nantes.fr)), and then you will have access to the schedule.

Schedules are published online monthly so you can choose your appointment at the Student Health Center for this checkup visit.

### Oral healthcare diagnostic

Some dentistry interns offer an oral diagnostic (Online appointments)

### Doctor's appointment - First stop - General practice, Gynecology, and Nutrition

Open to all students but priority is given to:

- students with financial problems
- students without a primary physician
- foreign students

### Documents you MUST bring to the appointment:

- your proof of universal health coverage (“sécurité sociale”)\*

**AND**

- your proof of supplementary insurance (“mutuelle”) if you have one
- your student card.

\*For European Union citizens, please bring your European health insurance card.



Maison des services universitaires

**If you bring all documents, you will not have to pay:** the Student Health Center will be reimbursed by your Student Health Care Coverage and Supplementary Insurance.

**If you do not have a supplementary insurance**, you will pay the “ticket modérateur”, which is the non-covered part of the cost of your medical expenses, and you will have to pay with credit card or check (6,90€ for a GP visit, 11,10€ for psychological visit).

## UNIVERSAL HEALTH CARE (SÉCURITÉ SOCIALE) AND STUDENT COMPLEMENTARY INSURANCE

### Student Complementary Insurance, what is it for?

The Student Complementary Insurance covers the expenses that are not reimbursed by the Universal Healthcare System.

Subscribing to a complementary health insurance is not mandatory, but highly recommended if **you wish to be reimbursed at 100%**.

More info and insurance comparator on <http://mutuelle.fr/infos/etudiant/>

### Health and health care coverage for foreign students.

Find all the information on [www.univ-nantes.fr/foreignstudent](http://www.univ-nantes.fr/foreignstudent)



### Universal Healthcare System (Sécurité Sociale)

As an international student, you can benefit from the French Universal Healthcare System free of charge, **no matter what type of visa you have: VLS-T ou VLS-TS.**

You must register online in order to have access to Healthcare services as well as reimbursements of your health expenses. **This procedure is mandatory and must be carried after arrival in France, once you have:**

- **Paid the CVEC Student life and campus contribution fee (91€) to the CROUS.**
- **Register at the University.**

**Affiliation for international students is mandatory, regardless of age. It cannot be replaced by a private insurance.**

To sign up please visit: [etudiant-etranger.ameli.fr](http://etudiant-etranger.ameli.fr)

If you are an **EU Citizen**, you must bring your European Health Insurance Card.

This card replaces your affiliation to the universal healthcare system provided by the French Social Security. Its validity dates shall cover your entire stay.

Whatever your situation, your health coverage is valid all along the academic year.

### More information on

[www.univ-nantes.fr/securitesociale](http://www.univ-nantes.fr/securitesociale)

## STUDENT INITIATIVES

**The university can support your initiatives with advice and funding from the FSDIE, the Fund for Solidarity and Development of Student Initiatives.**

Find out all student association contacts and news on:

[www.univ-nantes.fr/associations](http://www.univ-nantes.fr/associations)

### Get involved in student associations

The start of an academic year is a perfect time to learn more about student associations, get involved and participate in student life on the campus. Joining a student association is a great immersion experience and it is a good way to share and exchange knowledge. Student associations allow you to experience and to build your own projects in order to enhance your experience.

### Student initiatives

Do you have a project that deals with the University and its student body in Nantes, La Roche-sur-Yon or Saint-Nazaire: exhibits, debates, concerts, theater, sporting events?

**The Student Life Office is here to advise and assist you in your thought process and the setting up your personal or group projects.**

### Contact and information

[dve@univ-nantes.fr](mailto:dve@univ-nantes.fr) • [www.univ-nantes.fr/dve](http://www.univ-nantes.fr/dve) • [www.univ-nantes.fr/portailassos](http://www.univ-nantes.fr/portailassos)

Pôle étudiant - Student Centre - Campus du Tertre  
Tram line 2, stop Facultés (map p. 75 n° 11).



### Resources to implement your projects in the best conditions possible

The FSDIE (Fund for Solidarity and Development of Student Initiatives) is destined to finance your projects that stimulate and animate student life on all the different campuses of Université de Nantes.

## PÔLE ÉTUDIANT STUDENT CENTRE

### Bands who have performed here

Chloé • Arnaud Rebotini • Colin Stetson • Fuck Buttons • El-P • Mike Ladd • Sage Francis • Zombie Zombie • Radian • Beans • The Ex • Ninos Du Brazil • Speech DeBelle • James Chance • K-X-P • Moon Duo • C2C • Fishback • Simian Mobile Disco • Cheveu • Matias Aguayo & The Desdemonas • Josef Leimberg

### Directions to the Pôle étudiant

Tram line 2, stop Facultés  
Bus lines 25 and 83, stop Fac de Droit

(map p. 75 n° 11)

### Follow the Student Center events



#Poleetudiant



The Pôle étudiant on the Tertre Campus

### The Auditorium of Université de Nantes

Concerts, exhibits, debates, movie screenings, theater..., Pôle étudiant is **the hub of cultural life** at Université de Nantes.

It is a resource for your projects with **spaces dedicated to associations**: shared office space, a meeting room and workshops.

At the Pôle étudiant you will also find all the information about student life in Nantes and services to facilitate your studies.

The Pôle étudiant also has a **cafeteria** open all day and evening.

### Université de Nantes Events Calendar

Find out about events in the monthly magazine, available on campus and online on the university website: [www.univ-nantes.fr/agenda](http://www.univ-nantes.fr/agenda)

You will also receive the calendar every 15 days by email: [firstname.lastname@etu.univ-nantes.fr](mailto:firstname.lastname@etu.univ-nantes.fr)

## CULTURE

### Cultural classes and workshops

The University artistic and cultural workshops allow you to discover a new artistic activity in a friendly atmosphere.

They are open to everyone, without prerequisites nor extra fees.

Areas:

- writing, editing, poetry;
- image, cinema,...
- Graphic Design, Graffiti
- Acting, dancing, singing.

#### Contact:

[ateliers-culture@univ-nantes.fr](mailto:ateliers-culture@univ-nantes.fr)

#### Information on:

[www.univ-nantes.fr/culture](http://www.univ-nantes.fr/culture)

### Registration to cultural classes and workshops the week of September 23

More information on:

[univ-nantes.fr/culture](http://univ-nantes.fr/culture)



Theater Workshop «O.S.E.R»  
Production

### Boost your curiosity !

Do you want to be part of a workshop on a regular basis? The weekly workshop is made for you.

Do you want to participate beside the course week? Choose the weekend training.

Do you want to be part of some highlights? Participate to shared creations with invited artists on the campuses to discover contemporary creation, to live a friendly experience, ... and embellish your daily life.

### Experiment

**Discover original artistic events**, all year long, at the Pôle étudiant, at the University Theater, in libraries and in unexpected places. The cultural programming is available on our monthly calendar or on our website.

### Get involved

- participate in cultural workshops with artists and get involved in student associations on campus.
- Participate in the Turbulences Festival: every year at the beginning of April, students' art creations are represented on the Tertre campus. Whether you are an artist or an spectator, you can participate in this festival co-organized by the TU-Nantes University Theater and the CROUS Nantes Pays de la Loire.
- exhibit your photographic talents at the Temps d'Exposition.
- Contribute to the blog «The Culture and you» to give your opinion about culture at the University.

### Invent

We welcome your initiatives and projects! The university is happy to provide support.

**Contact:** [culture@univ-nantes.fr](mailto:culture@univ-nantes.fr)

Information on:

[www.univ-nantes.fr/culture](http://www.univ-nantes.fr/culture)



## SPORTS

The university service for physical education offers sports classes and personal training to fit into your academic schedule. It also gives you an opportunity to participate in competitions with the university sports teams.

Download the UnivNantes app to have access to the latest information regarding your sports activities. (see p. 37)



### As part of your academic program... For leisure... For competition?

#### As part of your academic program...

Sports activities can be an integral part of some academic career or they can be complementary to your academic schedule. You may choose from a variety of levels and times. Activities take place on different sites of the university.

#### For leisure...

A wide variety of activities: water sports, well-being activities, dance, team sports, racket sports, combat sports, sailing and gliding, and also climbing, mountain bike, circus, gymnastic, hiking, surf...

#### PLEASE NOTE:

For more information about the **registration process**, please refer to [www.univ-nantes.fr/sport](http://www.univ-nantes.fr/sport)

- **Pre-registration** on your student Intranet, starting from Sept 2<sup>nd</sup> 2019.
- **Start of activities and registration** confirmation from September 9<sup>th</sup> 2019.
- **the «OPEN» Week** (a week to discover all activities) from September 9<sup>th</sup> until Saturday 14<sup>th</sup> (included).

Flyers will be available at the SUAPS, located at 3, boulevard Guy Mollet in Nantes (► map p. 75 n° 15).

## SPORTS

### Support Université de Nantes in the university competitions

Teams are formed to represent the university at all levels of competition, whether it be local, academic, national, international, and depending on your level, your desires and your availability.

Join the university teams with the sports association of Université de Nantes (ASUN).

**Ask for your university sport licence** when registering at SUAPS.

### Competitive sports

A special system is reserved for competitive athletes registered with the Ministry of Youth and Sports in elite, senior, junior, in certified training centers, or in professional clubs. (see p. 21).

Special arrangements are also provided for students enrolled in university sports sections (SSU) or who play on national teams.

**For more information on sports activities at the university:** [www.univ-nantes.fr/sport](http://www.univ-nantes.fr/sport)



## PUBLIC TRANSPORT

## Nantes

- **Tan**, the public transport system serving greater Nantes: buses, trams, river bus (navibus), busway and airport shuttle.  
[www.tan.fr](http://www.tan.fr)
- **Bicloo**, self-service bike.  
[www.bicloo.nantesmetropole.fr](http://www.bicloo.nantesmetropole.fr)
- **Géovélo**, calculate your biking route depending on various criteria (the safest, the easiest...) on:  
[www.geovelo.nantesmetropole.fr](http://www.geovelo.nantesmetropole.fr)
- **Velocampus**, bike rental for students  
[www.velocampus.net](http://www.velocampus.net)
- **Marguerite**, Nantes self-service cars.  
[www.imarguerite.com](http://www.imarguerite.com)
- **Car-Sharing**, free car-sharing service:  
[www.ouestgo.fr](http://www.ouestgo.fr)

## Be aware!

Using your car is not the best way to go to the campuses.  
Prefer using public transport or a bike!

## Loire-Atlantique

- **Lila**, intercity bus service in Loire-Atlantique, 45 lines serving the local cities.  
<http://sedeplacer.loire-atlantique.fr>

## Pays de la Loire

- **Destineo**, an online service to map your route using public transportation.  
[www.destineo.fr](http://www.destineo.fr)
- **TER Pays de la Loire**, the local rail network.  
[www.ter-sncf.com](http://www.ter-sncf.com)

At Université de Nantes:

- You will find bike parking on each campus.
- Public Transports:  
[www.univ-nantes.fr/transports](http://www.univ-nantes.fr/transports)
- All the parking lots are indicated on the campus maps:  
[www.univ-nantes.fr/plans](http://www.univ-nantes.fr/plans)



A bike parking on the campus

## PUBLIC TRANSPORT

## Saint-Nazaire

- **Stran**, the public transport system serving greater Saint-Nazaire.  
[www.stran.fr](http://www.stran.fr)
- **VélYcéo**, with the partnership of the CARENE, bike rental for students.  
[www.velyceo.com](http://www.velyceo.com)

## La Roche-sur-Yon

- **Impulsyon**, the public transport system in La Roche-sur-Yon.  
[www.impulsyon.fr](http://www.impulsyon.fr)
- **La maison du vélo** offers bike rentals  
[www.centrevelo.wixsite.com/maisonduvelo](http://www.centrevelo.wixsite.com/maisonduvelo)



## USEFUL CONTACTS

## Your registrar's office

Find all the contact information for the registrar's office on your

**INTRANET** > *SCOLARITÉ, INSCRIPTION, CALENDRIER*

## ■ Law, economics and management

## IAE-Nantes

*Erdre Building*

Chemin de la Censive du Tertre  
BP 62 232  
44 322 Nantes CEDEX 3  
+33 (0)2 40 14 17 17  
» map p. 75 n° 9

*Petit-Port Building*

Chemin de la Censive du Tertre  
BP 62 232  
44 322 Nantes CEDEX 3  
+33 (0)2 76 64 18 00  
» map p. 75 n° 14

[www.iemn-iae.univ-nantes.fr](http://www.iemn-iae.univ-nantes.fr)

*Maritime school*

38 rue Gabriel Péri  
BP 90 303  
44 103 Nantes CEDEX 04  
+33 (0)9 70 00 04 30  
» map p. 74 n° 10

## Institute of General Administration (IPAG)

Chemin de la Censive du Tertre  
BP 81 307  
44 313 Nantes CEDEX 3  
+33 (0)2 40 14 16 11  
[www.ipag.univ-nantes.fr](http://www.ipag.univ-nantes.fr)  
» map p. 75 n° 7

## Law and political sciences

Chemin de la Censive du Tertre  
BP 81 307  
44 313 Nantes CEDEX 3  
+33 (0)2 40 14 15 15  
[www.droit.univ-nantes.fr](http://www.droit.univ-nantes.fr)  
» map p. 75 n° 7

## University library law

Chemin de la Censive du Tertre  
BP 12 236  
44 322 Nantes CEDEX 3  
+33 (0)2 53 52 25 00  
[bu-droit-contact@univ-nantes.fr](mailto:bu-droit-contact@univ-nantes.fr)  
» map p. 75 n° 10



Nouveau Tertre

## USEFUL CONTACTS

## ■ Languages

## Foreign languages and cultures

Chemin de la Censive du Tertre  
BP 81 227  
44 312 Nantes CEDEX 3  
+33 (0)2 40 14 12 99  
[www.flce.univ-nantes.fr](http://www.flce.univ-nantes.fr)  
» map. 75 n° 8

## ■ Letters and social sciences

## French literature and Humanities

Chemin de la Censive du Tertre  
BP 81 227  
44 312 Nantes CEDEX 3  
+33 (0)2 53 52 22 00  
[www.lettreslangages.univ-nantes.fr](http://www.lettreslangages.univ-nantes.fr)  
» map p. 75 n° 12

## Institute of Geography and regional planning (IGARUN)

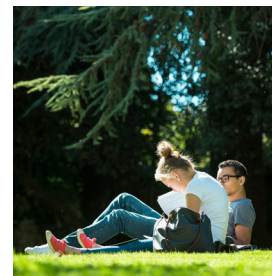
Chemin de la Censive du Tertre  
BP 81 227  
44 312 Nantes CEDEX 3  
02 53 48 75 52 (morning)  
02 53 48 75 12 (afternoon)  
[www.igarun.univ-nantes.fr](http://www.igarun.univ-nantes.fr)  
» map p. 75 n° 5

## History, art history and archaeology

Chemin de la Censive du Tertre  
BP 81 227  
44 312 Nantes CEDEX 3  
+33 (0)2 53 52 25 51  
[www.histoire.univ-nantes.fr](http://www.histoire.univ-nantes.fr)  
» map p. 75 n° 3

## University Library of Sciences

» p. 76



## Psychology

Chemin de la Censive du Tertre  
BP 81 227  
44 312 Nantes CEDEX 3  
+33 (0)2 53 52 26 49  
[www.psychologie.univ-nantes.fr](http://www.psychologie.univ-nantes.fr)  
» map p. 75 n° 3

## Sociology

23 rue du Recteur Schmitt  
44 312 Nantes Cedex 5  
+33 (0)2 53 48 77 55  
[sociologie.univ-nantes.fr](http://sociologie.univ-nantes.fr)  
» map p. 75 n° 24

## Science and technology of sports and physical activity (STAPS)

25 bis boulevard Guy Mollet  
BP 72 206  
44 322 Nantes CEDEX 3  
+33 (0)2 51 83 72 00  
[www.staps.univ-nantes.fr](http://www.staps.univ-nantes.fr)  
» map p. 75 n° 19

## University library of Letters

Chemin de la Censive du Tertre  
BP 32 211  
44 322 Nantes CEDEX 3  
+33 (0)2 40 14 13 32  
[bu-lettres-contact@univ-nantes.fr](mailto:bu-lettres-contact@univ-nantes.fr)  
» map p. 75 n° 6



## USEFUL CONTACTS

## ■ Health

## Medicine and Medical Technology

1 rue Gaston Veil  
BP 53 508  
44 035 Nantes CEDEX 1  
+33 (0)2 40 41 28 28  
[www.medecine.univ-nantes.fr](http://www.medecine.univ-nantes.fr)  
» map p. 74 n° 2

## Dentistry

1 place Alexis Ricordeau  
BP 84 215  
44 042 Nantes CEDEX 1  
+33 (0)2 40 41 29 21  
[www.odonto.univ-nantes.fr](http://www.odonto.univ-nantes.fr)  
» map p. 74 n° 5

## Pharmaceutical and biological sciences

9 rue Bias  
BP 53 508  
44 035 Nantes CEDEX 1  
+33 (0)2 53 48 41 00  
[pharmacie.univ-nantes.fr](http://pharmacie.univ-nantes.fr)  
» map p. 74 n° 4

## University library of Health

9 rue Bias - BP 61 112  
44 011 Nantes CEDEX 1  
+33 (0)2 53 48 47 00  
[bu-sante-contact@univ-nantes.fr](mailto:bu-sante-contact@univ-nantes.fr)  
» map p. 74 n° 4

## ■ Sciences

## Sciences and technology

2 rue de la Houssinière  
BP 92 208  
44 322 Nantes CEDEX 3  
+33 (0)2 51 12 52 12  
[www.sciences-techniques.univ-nantes.fr](http://www.sciences-techniques.univ-nantes.fr)  
» map p. 76

## University library of Sciences

2 rue de la Houssinière  
BP 82 207  
44 322 Nantes CEDEX 3  
+33 (0)2 51 12 52 20  
[bu-sciences-contact@univ-nantes.fr](mailto:bu-sciences-contact@univ-nantes.fr)  
» map p. 76 n° 18

## ■ University campus of Saint-Nazaire

## Gavy campus

Boulevard de l'université  
BP 152  
44 603 Saint-Nazaire CEDEX  
+33 (0)2 40 90 50 40  
[www.polesn.univ-nantes.fr](http://www.polesn.univ-nantes.fr)  
» map p. 79

## University library of Saint-Nazaire

(Library Étienne Garnier)  
Campus de Gavy Océanis  
Boulevard de l'Université  
BP 152  
+33 (0)2 40 90 50 96  
[bu-saintnazaire-contact@univ-nantes.fr](mailto:bu-saintnazaire-contact@univ-nantes.fr)  
» map p. 79

## ■ University campus of La Roche-sur-Yon

18 boulevard Gaston Defferre  
CS 50 020  
85 035 La Roche-sur-Yon  
+33 (0)2 53 80 41 00  
[www.polelrsy.univ-nantes.fr](http://www.polelrsy.univ-nantes.fr)  
» map p. 78

## University library of La Roche-sur-Yon

Pôle Universitaire Yonnais  
Campus de la Courtaisière  
18 bd G. Defferre  
+33 (0)2 53 80 41 34  
[bu-larochesuryon@univ-nantes.fr](mailto:bu-larochesuryon@univ-nantes.fr)  
» map p. 78 n° 8

## USEFUL CONTACTS

## ■ Technology

## IUT of Nantes

*La Fleuriaye campus:*  
2 avenue du Pr Jean Rouxel  
BP 539  
44 475 Carquefou CEDEX  
+33 (0)2 28 09 20 00  
» map p. 77

## Nantes campus:

3 rue Maréchal Joffre  
BP 34 103  
44 041 Nantes CEDEX 1  
+33 (0)2 40 30 60 90  
» map p. 74 n° 15 to 17  
[www.iutnantes.univ-nantes.fr](http://www.iutnantes.univ-nantes.fr)

## IUT of Saint-Nazaire

58 rue Michel Ange - BP 420  
44 606 Saint-Nazaire CEDEX  
+33 (0)2 40 17 81 59  
[www.iut-sn.univ-nantes.fr](http://www.iut-sn.univ-nantes.fr)  
» map p. 77



Pharmacy Building and Health Library

## IUT of La Roche-sur-Yon

18 boulevard Gaston Defferre  
CS 50 020  
85 035 La Roche-sur-Yon  
CEDEX  
+33 (0)2 53 80 41 00  
[www.iutlaroche.univ-nantes.fr](http://www.iutlaroche.univ-nantes.fr)  
» map p. 78 n° 1 to 4

## Polytech Nantes

Engineering School  
of Université de Nantes

## La Chantreterie campus

Rue Christian Pauc  
CS 50 609  
44 306 Nantes CEDEX 3  
+33 (0)2 40 68 32 00  
» map. 77 n° 1 and 2

## Gavy campus:

Gavy Océanis  
CS 70 152  
44 603 Saint-Nazaire CEDEX  
+33 (0)2 40 90 50 30  
» map p. 79 n° 19  
[www.polytech.univ-nantes.fr](http://www.polytech.univ-nantes.fr)

## University library of Technology

Rue Christian Pauc  
BP 70 611  
44 306 Nantes  
+33 (0)2 51 85 74 42/43  
[bu-technologies-contact@univ-nantes.fr](mailto:bu-technologies-contact@univ-nantes.fr)  
» map p. 77 n° 3

## ■ Teacher training school (ESPE)

4 chemin de Launay Violette  
BP 12227  
44322 Nantes CEDEX 3  
+33 (0)2 53 59 23 00  
[www.espe.univ-nantes.fr](http://www.espe.univ-nantes.fr)  
» map p. 75 n° 21

## ■ Associated and Partner Libraries

[www.univ-nantes.fr/](http://www.univ-nantes.fr/)  
BU > BIBLIOTHÈQUES  
ASSOCIÉES ET  
PARTENAIRES

## ■ Permanent University

Building "Ateliers et chantiers  
de Nantes"  
2 et 2 bis bd Léon Bureau  
Bureau 2016  
44200 Nantes  
+33 (0)2 72 64 88 64  
[univ-perm@univ-nantes.fr](mailto:univ-perm@univ-nantes.fr)  
» map p. 74 n° 21

## USEFUL CONTACTS

## ■ Services

**DVE - Student Life Office**

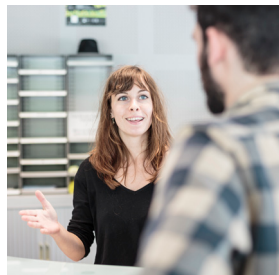
Pôle étudiant  
Chemin de la Censive du Tertre  
BP 41 214  
44 312 Nantes CEDEX 3  
+33(0)2 72 64 04 40  
[dve@univ-nantes.fr](mailto:dve@univ-nantes.fr)  
» map p. 75 n° 11

**DCI - Culture and Initiatives Office**

Pôle étudiant  
Chemin de la Censive du Tertre BP 41 214  
44 312 Nantes CEDEX 3  
+33 (0)2 72 64 04 53  
[culture@univ-nantes.fr](mailto:culture@univ-nantes.fr)  
» map p. 75 n° 11

**Quality and sustainable Development Office**

[dqdd@univ-nantes.fr](mailto:dqdd@univ-nantes.fr)

**DRI - International Relations Office**

Maison des échanges internationaux et de la francophonie (MEIF)  
15 Chaussée de la Madeleine  
BP 13 522  
44 035 Nantes CEDEX 1  
+33 (0)2 53 46 21 62  
[international@univ-nantes.fr](mailto:international@univ-nantes.fr)  
» map p. 74 n° 8

**Student health center**

Maison des services  
110 bd Michelet - BP 32 238  
44 322 Nantes CEDEX 3  
+33(0)2 40 37 10 50  
+33(0)2 40 37 10 69  
[sumpps@univ-nantes.fr](mailto:sumpps@univ-nantes.fr)  
» map p. 76 n° 35

**Disabled Students Office**

Maison des services  
110 bd Michelet - BP 42 212  
44 322 Nantes CEDEX 3  
+33(0)2 40 37 10 35  
[relais.handicap@univ-nantes.fr](mailto:relais.handicap@univ-nantes.fr)  
» map p. 76 n° 35

**Professional Integration Office**

Maison des services  
110 bd Michelet - BP 42 212  
44 322 Nantes CEDEX 3  
+33(0)2 40 37 10 00  
[suio@univ-nantes.fr](mailto:suio@univ-nantes.fr)  
» map p. 76 n° 35

**Entrepreneurship service**

IAE (Bâtiment Petit Port, bureau 112)  
BP 62 232  
44 322 Nantes CEDEX 3  
+33 (0)2 76 64 18 29  
[entrepreneuriat@univ-nantes.fr](mailto:entrepreneuriat@univ-nantes.fr)  
» map p. 75 n° 14

**Language Center & languages resources center**

Bâtiment 3 - 3ème étage  
Chemin la Censive du Tertre  
BP 81 227  
44 312 NANTES CEDEX 3  
+33(0)2 53 48 77 00  
[servicelanguages@univ-nantes.fr](mailto:servicelanguages@univ-nantes.fr)  
» map p. 75

**SUAPS - Sports**

3 boulevard Guy Mollet  
44 300 Nantes  
+33(0)2 40 99 84 48  
[suaps@univ-nantes.fr](mailto:suaps@univ-nantes.fr)  
» map p. 75 n° 15

**Vocational Training Center (CFA) inter-universities**

Building «Ateliers et chantiers de Nantes»  
2 bis bd Léon Bureau  
44200 Nantes  
+33(0)2 72 64 88 71  
[www.cfainteruniversites.com](http://www.cfainteruniversites.com)  
» map p. 74 - Campus Île de Nantes n° 1

## GLOSSARY

**BU**

University Library. There are 7 locations:

- BU Law
- BU Humanities
- BU Health
- BU Sciences + BU Technologies
- BU of La Roche-sur-Yon
- BU of Gavy Saint-Nazaire.

**C2i**

Computer and Internet Literacy Certificate

**CM**

Lecture [cours magistral]

**Components**

The UFRs, faculties, institutes and school are the components of Université de Nantes.

**Credits/ECTS**

The credit system provides credits valid in the countries of the European Higher Education Area. It is sort of a “common currency”. Each validated course unit (UE) gives a certain number of credits, based on a maximum of 30 credits per semester.

The credits earned are permanently capitalizable. They are transferable (subject to acceptance by the teaching staff) in France and Europe, that is to say, the students' achievements are recognized and they can continue their studies in another institution without starting over.

**CRL**

Languages Resource Center

**DCI**

Culture and Initiatives Office

**DEVU**

Office of Academics affairs and University Life

**DRI**

International Relations Office

**DVE**

Office of Student Life

**ECTS**

See Credits

**Erasmus +**

Programme funded by the European Union to support the European activities of higher education institutions, in particular student and staff exchanges.

## GLOSSARY

## Field of study

All the LMD programs are grouped into fields. One field is composed of several disciplines. Université de Nantes offers four fields:

- Arts, humanities, languages
- Law, economics, management
- Social sciences
- Science, technology, health

Each field is subdivided into majors and in some cases each major is divided into specialties.

## FSDIE

A fund for solidarity and development of student initiatives. It provides financial support for student projects that animate student life on the campuses.

## Gateways

Gateways enable students to switch programs or majors.

## LMD

License - Master - Doctorate

## Options

Students can personalize their course of study by choosing options.

## S1-S2

Semester 1 - semester 2

## SUAPS

Department of sports and physical activities

## SUIO

University information and guidance service

## SUMPPS

Department of preventive medicine and health promotion This service is also called the Student Health Center.

## TD

Tutorials [Travaux dirigés]

## TP

Labs [Travaux pratiques]

## UE

Course unit [Unité d'enseignement]

## UED

Introductory course unit [Unité d'enseignement découverte]

## UFR

Training and research unit  
Faculties are now called UFRs  
Certain faculties have kept the name "faculty"















.....

.....

.....

.....

.....

.....

.....

.....

.....

.....

.....

*Layout*  
Office of Communications  
International Relations Office

*Photos credits*  
Photo Service Université de Nantes  
Franck Tomps for Université de Nantes

*Paper made from responsibly managed forests and plant inks*

With the financial support of  **Région**  
**PAYS DE LA LOIRE**

**Join our community #univnantes on:**



1<sup>st</sup> French university community on Twitter and Youtube

**[WWW.UNIV-NANTES.FR/ENGLISH](http://WWW.UNIV-NANTES.FR/ENGLISH)**



**UNIVERSITÉ DE NANTES**